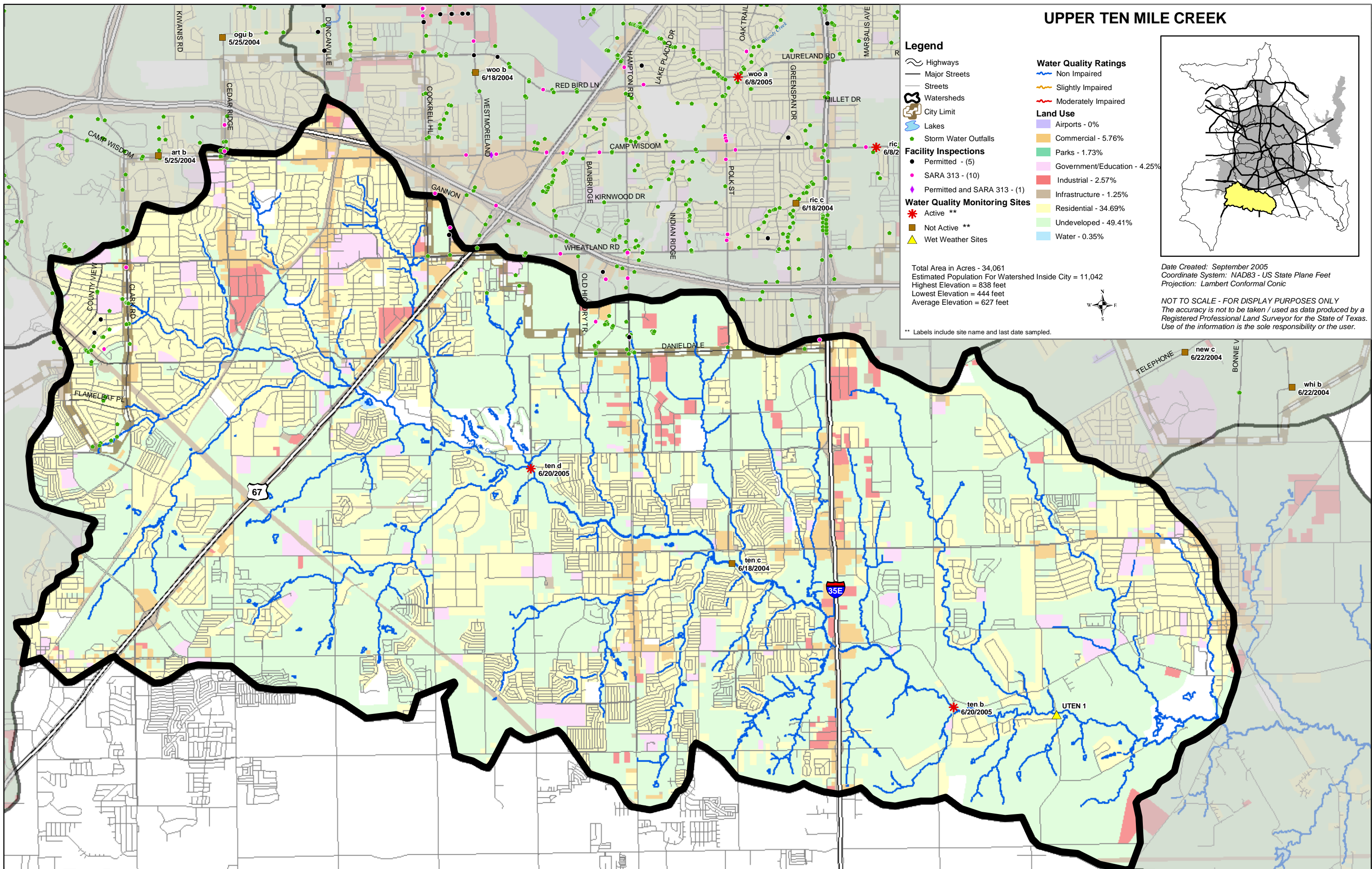


UPPER TEN MILE CREEK



Legend

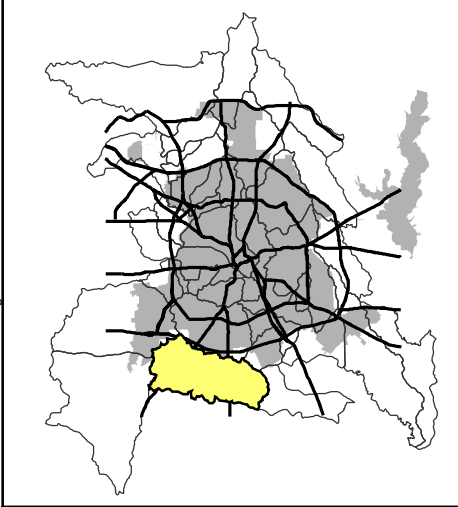
- Highways
- Major Streets
- Streets
- Watersheds
- City Limit
- Lakes
- Storm Water Outfalls
- Facility Inspections
 - Permitted - (5)
 - SARA 313 - (10)
 - Permitted and SARA 313 - (1)
- Water Quality Monitoring Sites
 - Active **
 - Not Active **
 - Wet Weather Sites

- ### Water Quality Ratings
- Non Impaired
 - Slightly Impaired
 - Moderately Impaired
- ### Land Use
- Airports - 0%
 - Commercial - 5.76%
 - Parks - 1.73%
 - Government/Education - 4.25%
 - Industrial - 2.57%
 - Infrastructure - 1.25%
 - Residential - 34.69%
 - Undeveloped - 49.41%
 - Water - 0.35%

Total Area in Acres - 34,061
 Estimated Population For Watershed Inside City = 11,042
 Highest Elevation = 838 feet
 Lowest Elevation = 444 feet
 Average Elevation = 627 feet



** Labels include site name and last date sampled.



Date Created: September 2005
 Coordinate System: NAD83 - US State Plane Feet
 Projection: Lambert Conformal Conic

NOT TO SCALE - FOR DISPLAY PURPOSES ONLY
 The accuracy is not to be taken / used as data produced by a Registered Professional Land Surveyor for the State of Texas. Use of the information is the sole responsibility of the user.