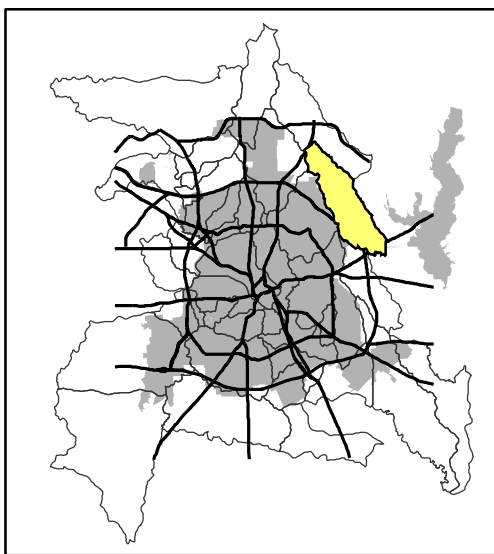


UPPER DUCK CREEK

Legend

- Highways
- Major Streets
- Streets
- Watersheds
- City Limit
- Lakes
- Storm Water Outfalls
- Facility Inspections**
- Permitted - (33)
- SARA 313 - (13)
- Permitted and SARA 313 - (5)
- Water Quality Monitoring Sites**
- Active **
- Not Active **
- Wet Weather Sites

- Water Quality Ratings**
- Non Impaired
- Slightly Impaired
- Moderately Impaired
- Land Use**
- Airports - 0%
- Commercial - 14.27%
- Parks - 4.01%
- Government/Education - 5.17%
- Industrial - 13.12%
- Infrastructure - 0.77%
- Residential - 46.54%
- Undeveloped - 15.09%
- Water - 0.3%



Total Area in Acres - 20,359
 Estimated Population For Watershed Inside City = 28,633
 Highest Elevation = 686 feet
 Lowest Elevation = 436 feet
 Average Elevation = 599 feet



Date Created: September 2005
 Coordinate System: NAD83 - US State Plane Feet
 Projection: Lambert Conformal Conic

NOT TO SCALE - FOR DISPLAY PURPOSES ONLY
 The accuracy is not to be taken / used as data produced by a Registered Professional Land Surveyor for the State of Texas. Use of the information is the sole responsibility of the user.

** Labels include site name and last date sampled.