

# SPRING CREEK

## Legend

- Highways
- Major Streets
- Streets
- Watersheds
- City Limit
- Lakes
- Storm Water Outfalls

## Facility Inspections

- Permitted - (0)
- SARA 313 - (0)
- Permitted and SARA 313 - (0)

## Water Quality Monitoring Sites

- Active \*\*
- Not Active \*\*
- Wet Weather Sites

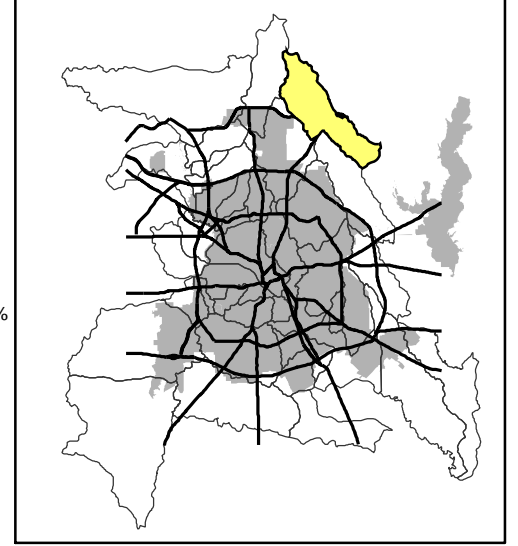
## Water Quality Ratings

- Non Impaired
- Slightly Impaired
- Moderately Impaired

## Land Use

- Airports - 0%
- Commercial - 11.73%
- Parks - 4.16%
- Government/Education - 7.09%
- Industrial - 3.67%
- Infrastructure - 1.88%
- Residential - 51.57%
- Undeveloped - 19.69%
- Water - 0.2%

Total Area in Acres - 23,836  
 Estimated Population For Watershed Inside City = 0  
 Highest Elevation = 736 feet  
 Lowest Elevation = 458 feet  
 Average Elevation = 612 feet



Date Created: September 2005  
 Coordinate System: NAD83 - US State Plane Feet  
 Projection: Lambert Conformal Conic

NOT TO SCALE - FOR DISPLAY PURPOSES ONLY  
 The accuracy is not to be taken / used as data produced by a Registered Professional Land Surveyor for the State of Texas. Use of the information is the sole responsibility of the user.

\*\* Labels include site name and last date sampled.

