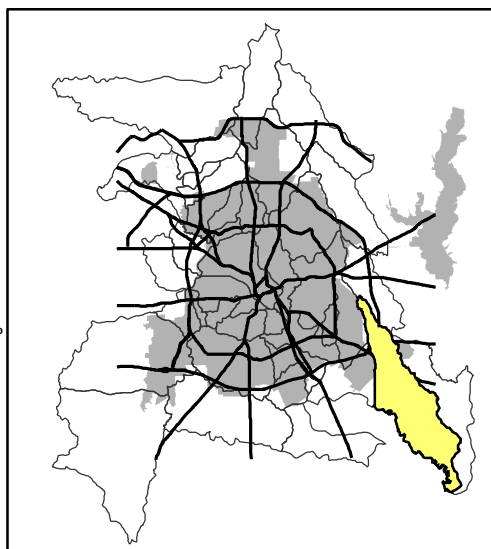


PARSONS SLOUGH

Legend

- Highways
 - Major Streets
 - Streets
 - Watersheds
 - City Limit
 - Lakes
 - Storm Water Outfalls
 - Facility Inspections**
 - Permitted - (14)
 - SARA 313 - (4)
 - Permitted and SARA 313 - (0)
 - Water Quality Monitoring Sites**
 - Active **
 - Not Active **
 - Wet Weather Sites
- Water Quality Ratings**
 - Non Impaired
 - Slightly Impaired
 - Moderately Impaired
 - Land Use**
 - Airports - .13%
 - Commercial - 3.31%
 - Parks - 2.25%
 - Government/Education - 1.41%
 - Industrial - 1.8%
 - Infrastructure - 0.64%
 - Residential - 19.92%
 - Undeveloped - 61.38%
 - Water - 9.15%



Total Area in Acres - 3546
 Estimated Population For Watershed Inside City = 16,441
 Highest Elevation = 544 feet
 Lowest Elevation = 352 feet
 Average Elevation = 459 feet



Date Created: September 2005
 Coordinate System: NAD83 - US State Plane Feet
 Projection: Lambert Conformal Conic

NOT TO SCALE - FOR DISPLAY PURPOSES ONLY
 The accuracy is not to be taken / used as data produced by a Registered Professional Land Surveyor for the State of Texas. Use of the information is the sole responsibility of the user.

** Labels include site name and last date sampled.