

LOWER TEN MILE CREEK

Legend

- Highways
- Major Streets
- Streets
- Watersheds
- City Limit
- Lakes
- Storm Water Outfalls
- Facility Inspections**
- Permitted - (0)
- SARA 313 - (0)
- Permitted and SARA 313 - (0)
- Water Quality Monitoring Sites**
- Active **
- Not Active **
- Wet Weather Sites

Water Quality Ratings

- Non Impaired
- Slightly Impaired
- Moderately Impaired

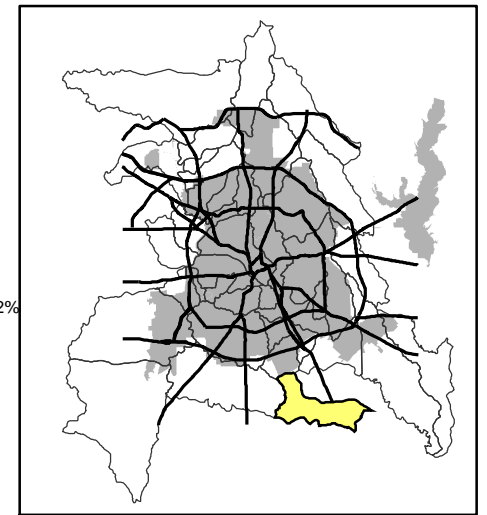
Land Use

- Airports - 1.05%
- Commercial - 1.97%
- Parks - 0%
- Government/Education - 0.12%
- Industrial - 1.67%
- Infrastructure - 1.86%
- Residential - 5.24%
- Undeveloped - 87.06%
- Water - 1.01%

Total Area in Acres - 15,658
 Estimated Population For Watershed Inside City = 248
 Highest Elevation = 588 feet
 Lowest Elevation = 352 feet
 Average Elevation = 480 feet

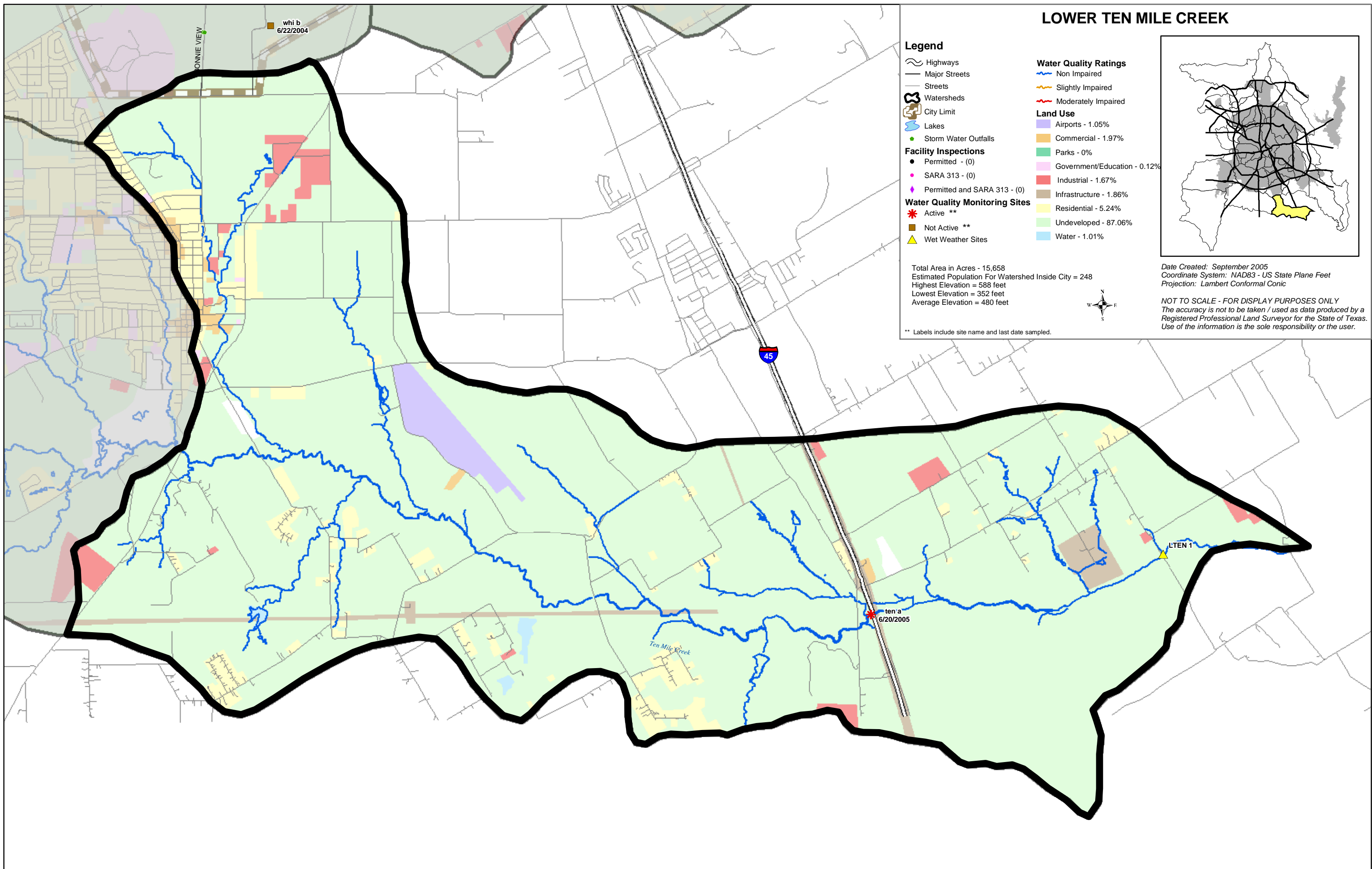


** Labels include site name and last date sampled.



Date Created: September 2005
 Coordinate System: NAD83 - US State Plane Feet
 Projection: Lambert Conformal Conic

NOT TO SCALE - FOR DISPLAY PURPOSES ONLY
 The accuracy is not to be taken / used as data produced by a Registered Professional Land Surveyor for the State of Texas. Use of the information is the sole responsibility of the user.



whi b
6/22/2004

ten a
6/20/2005

LTEN 1

Ten Mile Creek