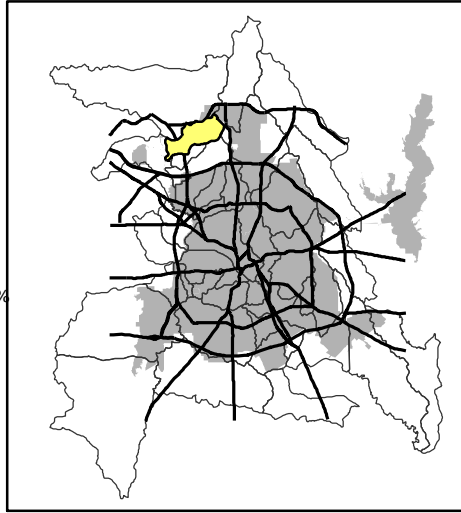


HUTTON BRANCH

Legend

- Highways
- Major Streets
- Streets
- Watersheds
- City Limit
- Lakes
- Storm Water Outfalls
- Facility Inspections**
 - Permitted - (2)
 - SARA 313 - (2)
 - Permitted and SARA 313 - (0)
- Water Quality Monitoring Sites**
 - Active **
 - Not Active **
 - Wet Weather Sites

- Water Quality Ratings**
- Non Impaired
 - Slightly Impaired
 - Moderately Impaired
- Land Use**
- Airports - 2.38%
 - Commercial - 13.18%
 - Parks - 2.67%
 - Government/Education - 4.49%
 - Industrial - 19.75%
 - Infrastructure - 1.35%
 - Residential - 31.1%
 - Undeveloped - 21.81%
 - Water - 3.27%



Total Area in Acres - 8113
 Estimated Population For Watershed Inside City = 9405
 Highest Elevation = 686 feet
 Lowest Elevation = 414 feet
 Average Elevation = 547 feet



Date Created: September 2005
 Coordinate System: NAD83 - US State Plane Feet
 Projection: Lambert Conformal Conic

NOT TO SCALE - FOR DISPLAY PURPOSES ONLY
 The accuracy is not to be taken / used as data produced by a Registered Professional Land Surveyor for the State of Texas. Use of the information is the sole responsibility of the user.

** Labels include site name and last date sampled.

