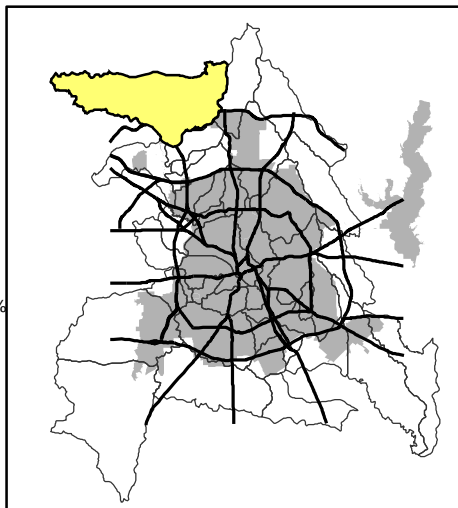


### ELM FORK ABOVE DENTON CREEK

#### Legend

- Highways
- Major Streets
- Streets
- Watersheds
- City Limit
- Lakes
- Storm Water Outfalls
- Facility Inspections**
- Permitted - (3)
- SARA 313 - (10)
- Permitted and SARA 313 - (0)
- Water Quality Monitoring Sites**
- Active \*\*
- Not Active \*\*
- Wet Weather Sites

- Water Quality Ratings**
- Non Impaired
  - Slightly Impaired
  - Moderately Impaired
- Land Use**
- Airports - 0%
  - Commercial - 5.14%
  - Parks - 4.99%
  - Government/Education - 2.49%
  - Industrial - 2.94%
  - Infrastructure - 1.24%
  - Residential - 28.9%
  - Undeveloped - 52.52%
  - Water - 1.78%

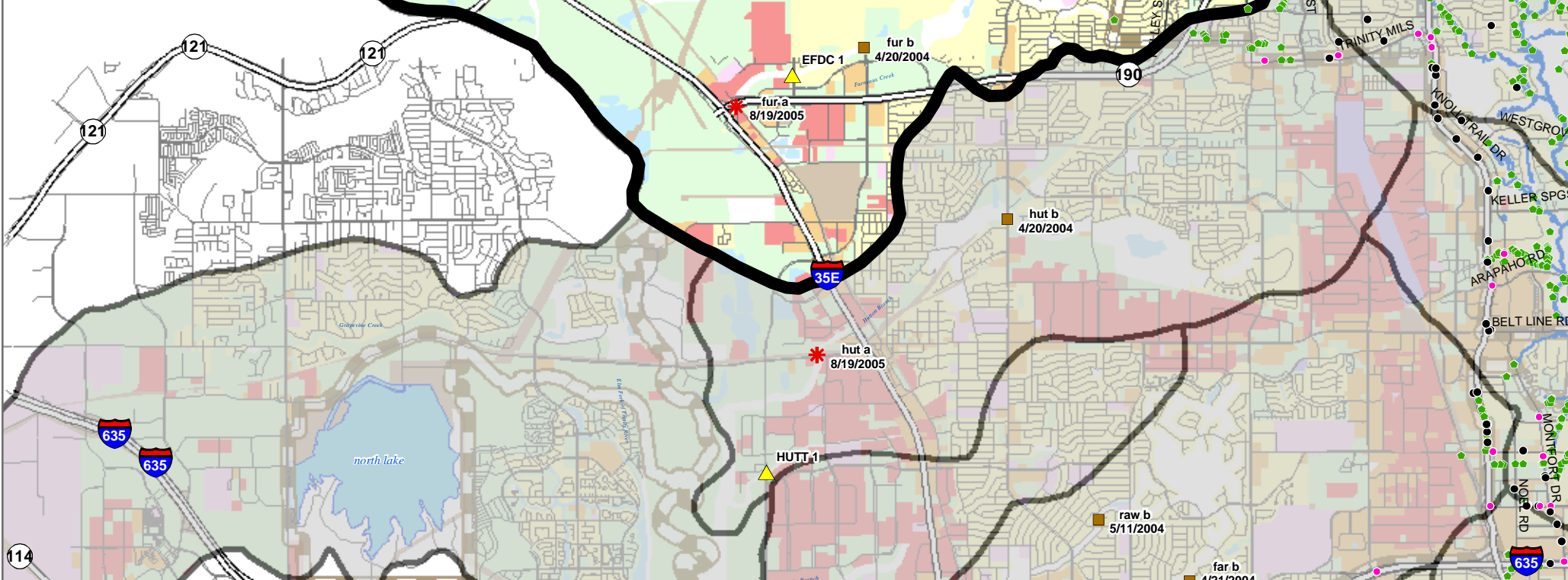


Total Area in Acres - 51,985  
 Estimated Population For Watershed Inside City = 30,059  
 Highest Elevation = 696 feet  
 Lowest Elevation = 584 feet  
 Average Elevation = 648 feet



Date Created: September 2005  
 Coordinate System: NAD83 - US State Plane Feet  
 Projection: Lambert Conformal Conic

**NOT TO SCALE - FOR DISPLAY PURPOSES ONLY**  
 The accuracy is not to be taken / used as data produced by a Registered Professional Land Surveyor for the State of Texas. Use of the information is the sole responsibility or the user.



\*\* Labels include site name and last date sampled.