

# Memorandum



CITY OF DALLAS

DATE April 18, 2008

TO Trinity River Corridor Project Committee Members:  
David A. Neumann (Chairman)  
Mayor Pro Tem Dr. Elba Garcia (Vice-Chair)  
Deputy Mayor Pro Tem Dwaine Caraway  
Carolyn R. Davis  
Linda Koop

Pauline Medrano  
Mitchell Rasansky  
Steve Salazar

SUBJECT **Power Transmission Lines in the Trinity River Corridor Follow-up**

Attached is the Power Transmission Lines in the Trinity River Corridor Follow-up presentation to be given at the April 22, 2008 Trinity River Corridor Project Committee Meeting.

Please let me know if you have any questions or need additional information.

A handwritten signature in black ink, appearing to read 'Jill Jordan'.

Jill A. Jordan, P.E.  
Assistant City Manager

c: Honorable Mayor and Members of the City Council  
Mary K. Suhm, City Manager  
Ryan S. Evans, First Assistant City Manager  
Ramon F. Miguez, P.E., Assistant City Manager  
A.C. Gonzalez, Assistant City Manager  
David Brown, Interim Assistant City Manager  
Dave K. Cook, Chief Financial Officer  
Deborah A. Watkins, City Secretary  
Thomas P. Perkins, Jr., City Attorney  
Craig D. Kinton, City Auditor  
Judge Jay E. Robinson  
Chandra Marshall-Henson, Asst. to the City Manager  
Frank Libro, Director, Public Information Office

# Power Transmission Lines in the Trinity River Corridor Follow-up

April 22, 2008



# Purpose

- Provide follow-up information from the March 4, 2008 TRCPC meeting related to:
  - Next steps for West Levee Norwood transmission line
  - Should West Levee Norwood transmission line be installed on the new Sylvan Bridge structure?

# Next Steps for West Levee Norwood Transmission Line

# West Levee Norwood Transmission Line - Background

- In June 2007, the Public Utility Commission of Texas (PUCT) approved West Levee Norwood Transmission Line along the locally preferred route using:
  - A. Aerial structures along median of Irving Boulevard from Regal Row to Sylvan
  - B. Aerial structures across the Trinity River, east of Sylvan Bridge to near the West Levee and Canada Drive
  - C. Underground along West Levee of Trinity River (below Canada Drive) from Sylvan to West Levee Switching Station

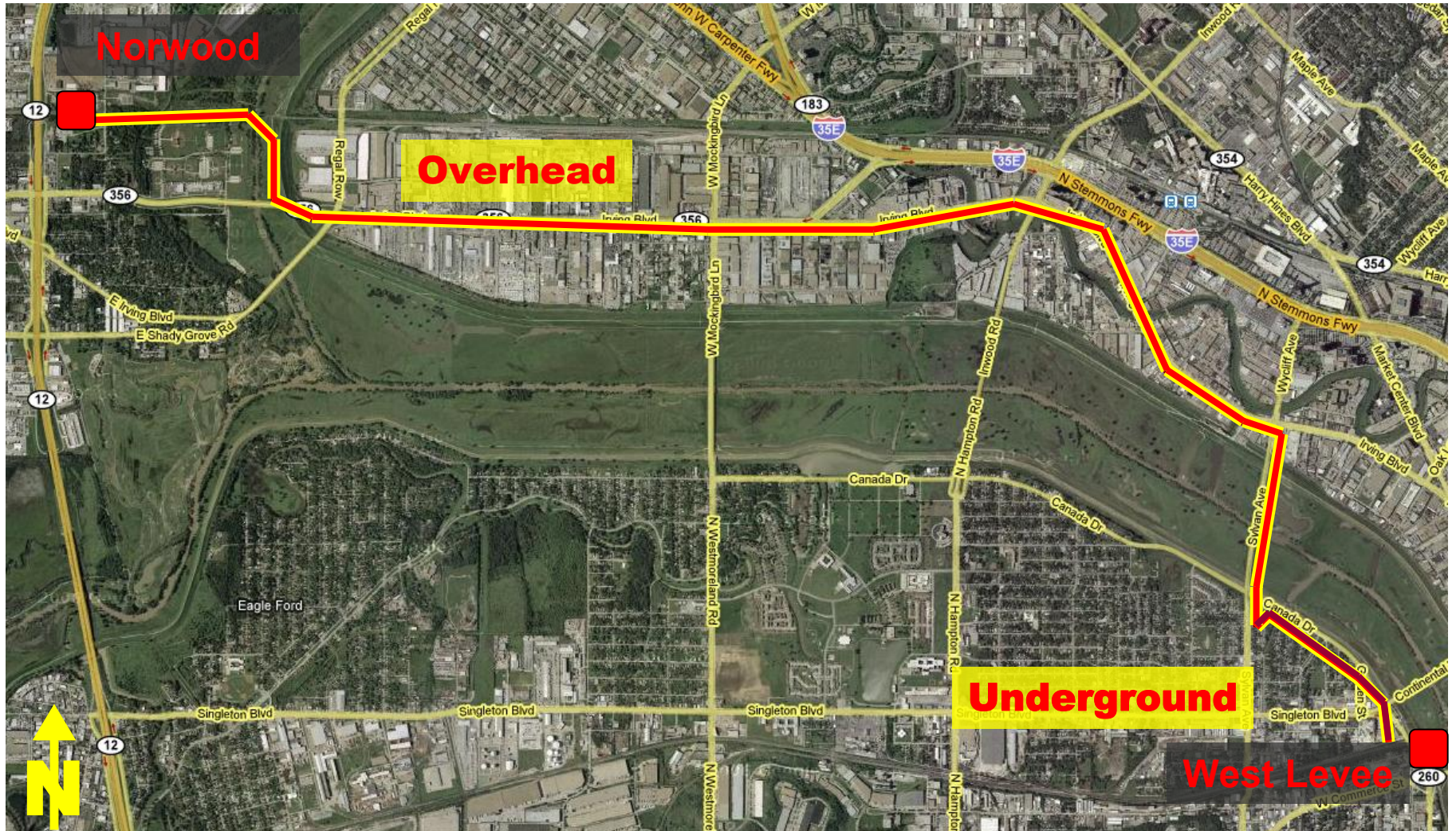


Sylvan Bridge looking south

# West Levee Norwood Transmission Line - Background

- Favorable PUCT approval was the outcome of Oncor and City of Dallas working in cooperation over several years to determine the best routing for the transmission line
  - Avoids routing the new transmission line along the levees of the Trinity River
  - Provides for underground installation below Canada Drive from West Levee switching station to Sylvan Avenue
    - Total incremental underground installation cost: \$18.0M
    - City pays 25 percent of incremental underground installation cost (\$4.5M)
    - PUCT allowed remaining \$13.5M in incremental underground installation cost to be “uplifted” to the system-wide transmission rate
  - Creates opportunity to consolidate existing 138 kV transmission lines along the East Levee from Continental Avenue with the new transmission line
- Project needed to serve the CBD and surrounding areas of West Dallas and Oak Cliff
  - Without new transmission line, there is a potential for extended power outages near downtown Dallas during high load conditions
- Project schedule calls for new transmission line to be in service in December 2009

# West Levee Norwood Transmission Line - Approved Route



# West Levee Norwood Transmission Line – Conveyance of Easements



## Conveyance of Easements at 2 locations:

1. Trinity River crossing to Norwood Switching Station in Irving
  - Alignment north of Irving Boulevard along East Levee, then across Trinity River just north of Trinity Railway Express right-of-way
2. Trinity River crossing at Sylvan Bridge
  - Establish line alignment just east of Sylvan Bridge to minimize impact on Crow Lake and park

**Oncor Electric Delivery will pay City of Dallas fair market value of the easements in accordance with State Law.**

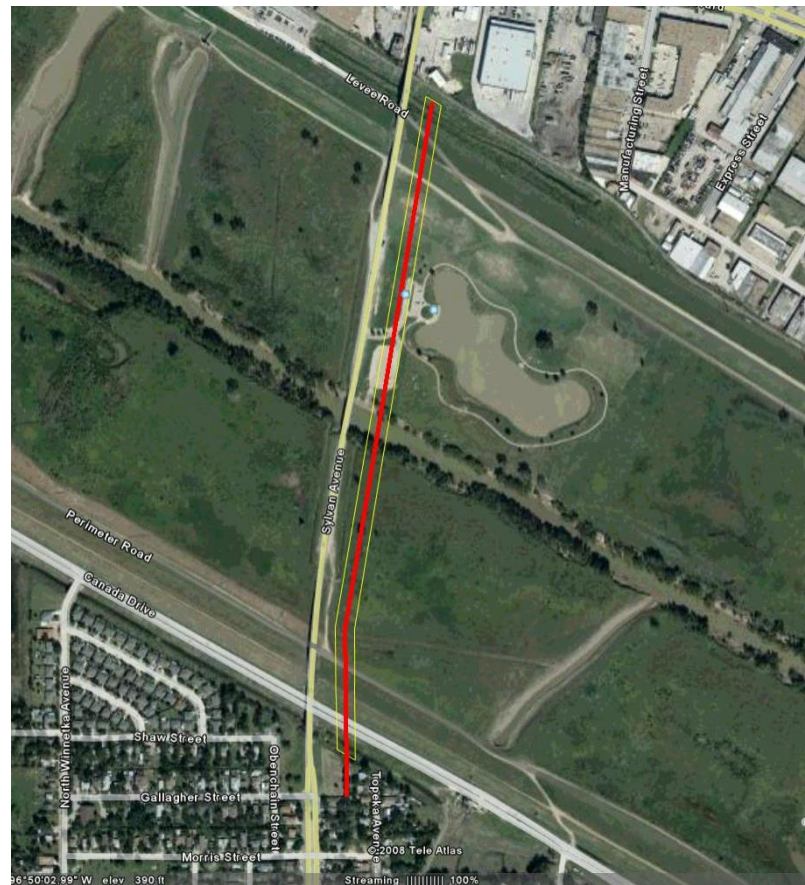
# West Levee Norwood Transmission Line – Next Steps

<b>Action Item</b>	<b>Status</b>
Secure all easements and permits needed for underground and overhead construction	Authorize Public Hearing: <ul style="list-style-type: none"> <li>– Park Board April 17</li> <li>– City Council May 14</li> </ul> Council Approval: June 11
Finalize the location and property needed for underground to overhead line transition site	Survey and appraisal work underway
Coordinate construction scheduling with respect to Margaret Hunt Hill Bridge, Sylvan Bridge, and Oncor work	Ongoing
Coordinate traffic impacts on Canada Dr. and Irving Blvd.	To begin during design phase of project
Work with City of Dallas to locate structure locations on Irving Blvd.	To begin during design phase of project

**Should West Levee Norwood  
Transmission Line be  
Installed on New Sylvan  
Bridge Structure?**

# Should West Levee Norwood Transmission Line be Installed on New Sylvan Bridge Structure?

- During the March 4, 2008 TRCPC meeting there was discussion of modifying the PUCT approved plan to install the new West Levee Norwood transmission line
- Approved plan provides for the transmission line to cross the Trinity River on aerial structures just east of the Sylvan Bridge
- Discussion centered on modification to install the transmission line on the new Sylvan Bridge currently under design



Alignment of West Levee Norwood power line crossing the Trinity River east of Sylvan Bridge

# Should West Levee Norwood Transmission Line be Installed on New Sylvan Bridge Structure?

- Installation of the West Levee Norwood 345kV Transmission Line on the new Sylvan Bridge structure would require the same technology as underground installation (encasement in conduit and oil bath, separation of phases, etc.)
- Modification of the PUCT approved plan for installation of the West Levee Norwood transmission line would present several challenges, including:
  - Opening a new proceeding before the PUCT to modify the approved plan
  - Delay the transmission line project
  - Negative cost impacts to:
    - West Levee Norwood transmission line project
    - Sylvan Bridge replacement project

# Should West Levee Norwood Transmission Line be Installed on New Sylvan Bridge Structure?

- Opening a new proceeding before the PUCT to modify the approved plan would essentially start the entire transmission line project over
- Could jeopardize the favorable results previously achieved by both the City and Oncor and could result in an appreciably inferior outcome
  - The City and Oncor were able to reach agreement regarding the preferred routing and construction type
  - The City provided testimony to the PUCT that the route best represented community values and made the case for underground construction of the West Levee segment and the “uplifting” of 75% of the incremental costs to the system-wide transmission rate
  - The PUCT approved the route and funding plan proposed by the City
  - The City has funded an escrow in the amount of \$4.5 million as the City’s 25% share of the incremental cost

# Should West Levee Norwood Transmission Line be Installed on New Sylvan Bridge Structure?

- Delay the transmission line project
  - Installation of the transmission line on the Sylvan Bridge would result in at least a 2-year delay in completion of the transmission line
    - Completion of transmission line project is currently scheduled for December 2009
    - Sylvan Bridge is currently scheduled to begin construction in December 2009, and to be completed mid to late 2011
  - A 2-year delay to transmission line would severely strain Oncor's ability to serve the CBD and surrounding areas of West Dallas and Oak Cliff
    - Potential for extended power outages near downtown Dallas during high load conditions

# Should West Levee Norwood Transmission Line be Installed on New Sylvan Bridge Structure?

- Negative cost impacts – installing transmission line on Sylvan Bridge would significantly increase costs:
  - West Levee Norwood transmission line project
    - Additional construction cost of \$12.15 million (2008 preliminary estimate)
    - Additional property acquisition costs (to be determined) for a transition station on the East Levee side of the Trinity River near Sylvan and Irving Boulevard
  - Sylvan Bridge replacement project
    - Preliminary estimate of a minimum additional cost of \$2.0 million to modify the design of the bridge to accommodate transmission line
  - Additional costs currently unfunded
  - Costs for the entire project are likely to continue to escalate over the two years the project would be delayed

# Should West Levee Norwood Transmission Line be Installed on New Sylvan Bridge Structure?

- **Recommendation:** Due to the challenges associated with modifying the PUCT approved plan for installation of the West Levee Norwood Transmission Line, delay of the project, and negative cost impacts, it is recommended to continue with the PUCT approved plan to install the transmission line using:
  - A. Aerial structures along median of Irving Boulevard from Regal Row to Sylvan
  - B. Aerial structures across the Trinity River, east of Sylvan Bridge to near the West Levee and Canada Drive
  - C. Underground along West Levee of Trinity River (below Canada Drive) from Sylvan to West Levee Switching Station